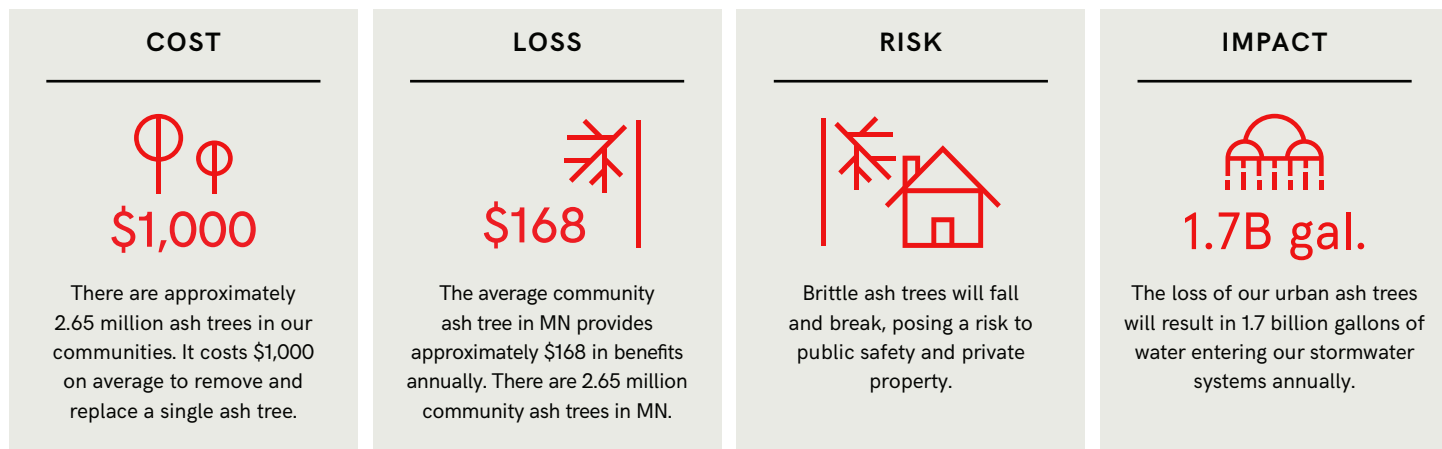


The Cost of Emerald Ash Borer to Minnesota



THE PROBLEM

Emerald Ash Borer (EAB) is the most destructive invasive forest pest we have ever encountered, even more destructive than Dutch Elm Disease which required a state investment of **\$500 million to combat**. **1 in 5 trees in Minnesota's cities and towns are at risk**, and action must be taken to reduce costs and liabilities and save this species that defines our community landscapes.



THE SOLUTION

A state-funded comprehensive strategy would slow the spread of EAB, save millions of dollars, and preserve the valuable economic and environmental benefits that were the reason the trees were planted in the first place. **Hundreds of thousands of public trees** are worthy of low cost treatment to prevent EAB.



137 out of 201

*Number of legislators currently representing districts within the MN Department of Agriculture's EAB quarantined areas as of November, 2017.

1.1 Billion

Number of ash trees in Minnesota's forests and communities – the most of any state in our nation.

Two

Number of municipal ash trees preserved for 20 years for the same cost of removing and replacing one similarly sized tree.

At Least \$5 Million

Number of dollars needed per year in a matching grant program to help local governments manage this invasive species.