

EXTRA EXTRA EXTRA



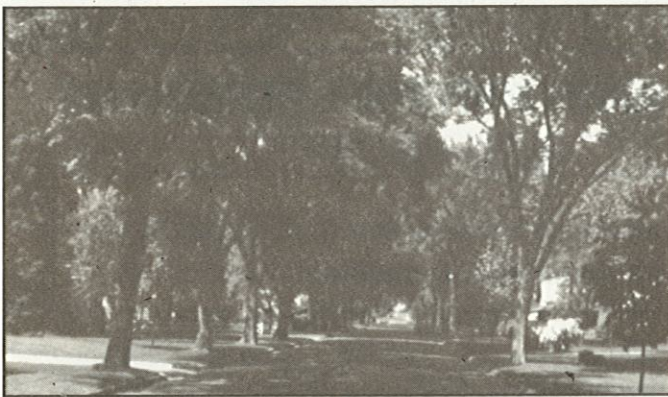
MnSTAC Delivers Its Long-Awaited “Report to the 1997 Legislature”

Dateline: Minnesota, USA- January 1997

The **Minnesota Shade Tree Advisory Committee (MnSTAC)** has just released its **“Report to the 1997 Legislature”**. In this Report, **MnSTAC** reminds us that trees have in the past and continue to play now and in the future an integral part of our human existence. The mission of the **Minnesota Shade Tree Advisory Committee** is “to advance

Minnesotan’s commitment to the health, care and future of all community forests.” Each year, **MnSTAC** prepares a Report to the State Legislature detailing the current threats and issues to our urban forests, recent accomplishments, and opportunities for Legislative action. In 1997, **MnSTAC** focus on these four areas:

Trees As Community Infrastructure



“You can’t see the forest for the trees.”

Woodland Preservation and Tree Protection



“Trees don’t get any respect!”

Maintain Consistent Funding for Tree Programs



“Trees and people need each other.”

Tree “Smarts”-The Need for Education



“An apple a day keeps the doctor away.”

ISSUE: TREES AS COMMUNITY INFRASTRUCTURE

THREAT: City-owned trees are seldom seen as an integral element of a community's infrastructure. Consequently, they fail to receive the proper care and attention they need.

FACTS:

- Nationwide, community forests contribute a value of \$30 billion to city infrastructures.
- On average, for every four trees removed due to insects, diseases, storms, and/or construction, only one tree is replaced.

ACCOMPLISHMENTS:

- Spraying to control the spread of gypsy moth was completed on over 200 acres in the **City of Apple Valley** and **Lent Township** (1996 moth trapping indicated its potential establishment in Minnesota).
- Celebrated the one millionth foot of control line plowed to combat the spread of oak wilt disease (some 4,000 infection centers have been treated in the **seven-county Metropolitan Area** since 1991).

OPPORTUNITIES:

- Provide State funding for both the Gypsy Moth Control Program and the Oak Wilt Suppression Program at the **MDA** due to declining Federal funds to coordinate control efforts with other State and Federal Agencies.
- Provide State funding for an urban and community forestry grant program to provide the necessary financial assistance to cities in need of improving the management of their community forest resource.

ISSUE: MAINTAIN CONSISTENT FUNDING FOR TREE PROGRAMS

THREAT: The proper care and maintenance needed for healthy community trees is threatened due to declining budgets at all levels of government (federal, state and local).

FACTS:

- Community forest products include:
(1) increased property values;
(2) safer, healthier communities with enhanced neighborhood livability;
(3) cleaner air and purer water; and,
(4) a more balanced and sustainable urban ecosystem.

ACCOMPLISHMENTS:

- Continued the **DNR's** "Minnesota ReLeaf" program (**LCMR** funded) providing \$375,000 in energy conservation tree planting grants to **Le Roy** and **Walker** (and some 60 other cities) and non-profit groups.
- Planted over 21,000 trees in 32 communities from **Coleraine** to **Caledonia** in cooperation with city volunteer organizations through **MNDOT's** Community Roadside Landscaping Partnership Program.

OPPORTUNITIES:

- Provide State funding for the current Federally funded urban forestry positions within the **DNR**, **MDA**, **MES** and **MnDOT** to secure the stability for the on-going grant and technical assistance programs.
- Provide continuing State funding for the Minnesota ReLeaf Program and the Community Roadside Landscaping Partnership Program to assist communities in enhancing and properly managing their trees.

ISSUE: WOODLAND PRESERVATION AND TREE PROTECTION

THREAT: Throughout the state, numerous woodland areas and individual trees are destroyed or damaged each year due to development and construction activities.

FACTS:

••An average urban tree supplies annual values consisting of air conditioning, **\$73**; **\$75** for soil erosion/stormwater control; wildlife shelter, **\$75**; and, air pollution control, **\$50**; total annual value **\$273**. Over 50 years the compounded benefits equal nearly **\$57,000**.

ACCOMPLISHMENTS:

- In cooperation with the **Minnesota OEA, DNR, EQB, MES, PCA, DOT**, the **Metropolitan Council** and the **USDA Forest Service** the "1996 Minnesota Conference on Sustainable Development" was held and attended by nearly 800 federal, state, county, city staff and private individuals.
- In cooperation with the **DNR**, developed a "travelling" tabletop display on Woodland Preservation and Tree Protection.

OPPORTUNITIES:

- Provide State funding for continuing education efforts directed at community officials, builders, developers, and property owners about tree preservation and other efforts for appropriate community sustainable development.
- Provide State funding for the development, printing and distribution of a publication on the "Best Management Practices for Development in Wooded Areas".

ISSUE: TREE "SMARTS"-THE NEED FOR EDUCATION

THREAT: Every year well-intentioned individuals (from private citizens to public workers) ignorantly damage countless trees through improper maintenance practices.

FACTS:

••Tree "topping" (removing all of a tree's upper limbs) for maintenance is the primary improper technique damaging our city's trees.

**The majority of an urban tree's root system is located within the top 12 inches of the surface.

ACCOMPLISHMENTS:

- The **Tree Trust, DNR** and **MES** continued the "TREES for Teens" education program with various projects undertaken in 39 schools.
- The **MnDOT** produced a CD-ROM "Trees and Shrubs for Minnesota Landscapes and Roadsides" to assist communities in proper plant selection.
- The **Tree Emergency Response Task Force** distributed 650 folders of disaster mitigation information.

OPPORTUNITIES:

- Provide additional State funding for the "TREES for Teens" program to expand the number of schools and community-service projects.
- **Provide State funding to develop a CD-ROM regarding proper tree planting and tree maintenance.
- Provide State funding for the expansion of efforts related to storm damage mitigation and disaster response for tree needs.

MnSTAC Member Affiliations

The Minnesota Shade Tree Advisory Committee (MnSTAC) is recognized throughout Minnesota for its expertise, advice, coordination, and support related to urban and community forestry. It is an advocate for public and private community forestry interests statewide and serves as a forum for the exchange and dissemination of ideas and information.

MnSTAC is an organization of diverse individuals representing a wide spectrum of tree related interests. It fosters and supports local community tree programs across the state so that healthy community forests are fully integrated into community development, infrastructure, education and management.

Approximately 150 people are now members of MnSTAC which holds its monthly meetings throughout the State. The following list recognizes communities, organizations, businesses, and agencies represented on MnSTAC:

Accent Company; American Forests; Anoka County Conservation District; Anoka County Tree Board; Bachman's Wholesale Center; Bailey Nurseries, Inc.; Bullock Tree; Canopy Tree Care; Chisago-Isanti Woodland Council; Cities of: Andover, Apple Valley, Blaine, Bloomington, Brooklyn Center, Burnsville, Coon Rapids, Crystal, Duluth, Eagan, Eden Prairie, Edina, Golden Valley, Ham Lake, Hibbing, Hutchinson, Lino Lakes, Mankato, Maple Grove, Mounds View, New Brighton, New Hope, Plymouth, Ramsey, Robbinsdale, Roseville, Savage, St. Louis Park, St. Paul, Sunfish Lake, Thief River Falls; City of Ramsey Tree Board; Cook Company; Dakota County Parks Department; Dahlgren, Shardlow, and Uban, Inc.; Dain Bosworth, Inc.; EnvironMentor Systems; Heartwood Forestry; Hennepin County, Department of Environment and Energy; Hennepin Parks; Institute for Agriculture and Trade Policy; Iron Range Resources and Rehabilitation Board, Mineland Reclamation Division; Itasca Community College; Kunde Company Inc.; Living Sculpture Tree Care; Merriam Park Environmental Committee; Minneapolis Committee on Urban Environment; Minneapolis Park and Recreation Board; Minneapolis Star and Tribune; Minnehaha Creek Watershed District; Minnesota Association of SWCD's; Minnesota Department of Agriculture, Division of Plant Protection; Minnesota Department of Natural Resources, Division of Forestry; Minnesota Department of Public Service; Minnesota Department of Transportation; Minnesota House of Representatives; Minnesota Office of Tourism; Minnesota Office of Waste Management; Minnesota Power; Minnesota Senate; Minnesota State Horticultural Society; Mycological Applications; National Urban Forest Council; Northern States Power; Plant Health Associates, Inc.; Plant Disease Diagnostics; Rainbow Treecare; Ramsey County Parks and Recreation Department; River Front Corporation; Rochester Parks and Recreation; Sherburne County Tree Board; Treescapes; Source Technology Biologicals, Inc.; St. John's University; Top Notch Tree Care; Tree Trust; University of Minnesota, Departments of: Entomology, Forest Products, Forest Resources, Plant Pathology, and Minnesota Extension Service; Minnesota Landscape Arboretum; United States Department of Agriculture, Forest Service-Northeastern Area and North Central Forest Experiment Station; Vernix Forestry Consultants; V.A. Medical Center; Washington County Health Department; Wilkinson Hardwoods.

MnSTAC is committed to bring the best information and resources to the public, professionals and decision-makers of Minnesota.

For more information contact:

Minnesota Shade Tree Advisory Committee
90 West Plato Boulevard, Room 226
St. Paul, Minnesota 55107-2094



Printed with soy based ink on recycled paper
(containing at least 10% post-consumer waste).